

AmpliClean™ LF

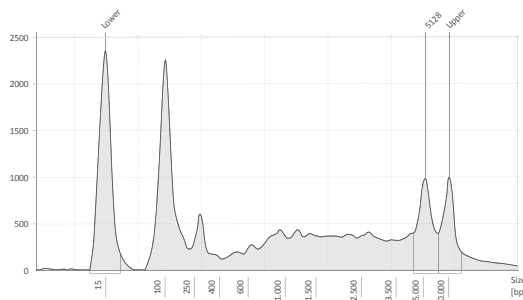
✓ **Bead clean-up for long fragments**

AmpliClean™ LF vastly outperforms competitor beads in clean-up of fragments ranging from 1 to 6kb, removing any undesired fragment sizes. Customer data demonstrated a marked improvement in sequencing output.

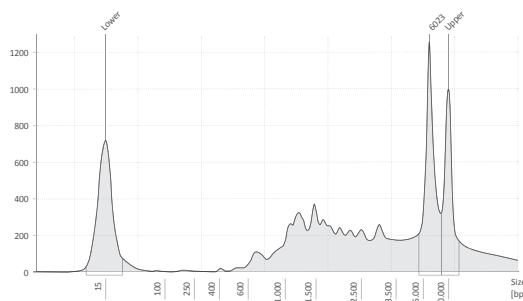


Clean-up comparison AmpliClean™ LF versus AmpliClean™

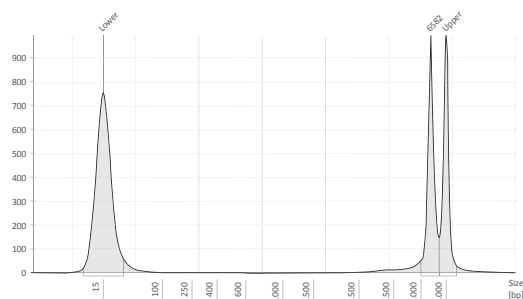
A library of amplicons of >4kb in size was used to compare the clean-up performance of AmpliClean™ LF with the drop-in replacement product AmpliClean™.



Unpurified RC-PCR product



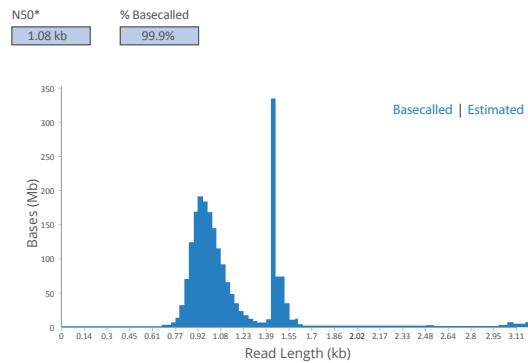
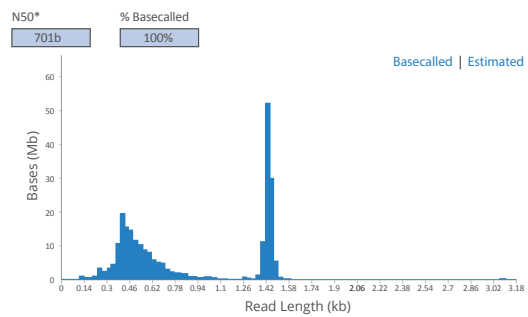
Library cleaned with AmpliClean™, Unwanted short fragments remain.



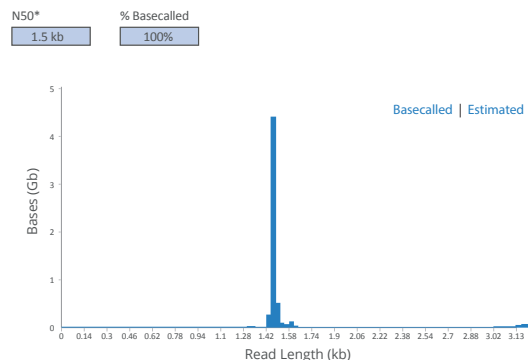
A clean purified library with AmpliClean™ LF

Customer clean-up comparison AmpliClean™ LF

The customer compared AmpliClean™ LF clean-up to product B using Nanopore sequencing.



Sequencing report from two runs, clearly showing that smaller background reads were not properly removed by product B.

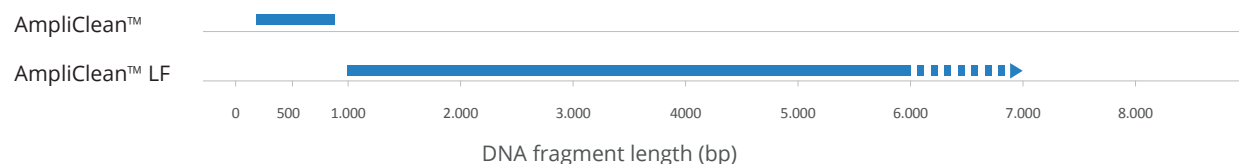


All background reads were removed with AmpliClean™ LF, improving sequencing output.

Conclusion

AmpliClean™ LF outperforms Product B and standard AmpliClean™ beads in removing unwanted short DNA fragments. The product is optimized for ≥ 1 kb fragments, ensuring reliable size selection in any NGS workflow. Its simple bind-wash-elute process makes it ideal for manual workflows and compatible with automation.

AmpliClean™ / AmpliClean™ LF



Product Description

Superior long DNA fragment recovery

The AmpliClean™ LF Cleanup Kit ensures high recovery and superior-quality DNA without salt carryover. It uses paramagnetic bead-based technology for efficient DNA purification across PCR and Next-Generation Sequencing (NGS) applications. Optimized for ≥ 1 kb fragments, it provides consistent size selection in NGS workflows.

Simple, automation-ready workflow

AmpliClean™ LF follows a three-step bind, wash, and elute process. PCR products selectively bind to magnetic beads, while an ethanol wash removes dyes, nucleotides, salts, and primers, leaving ultra-pure DNA. No centrifugation or vacuum filtration is required, making it fully compatible with automated liquid handlers and Alpaqua® magnet plates or manual single-tube stands.

- ✓ Optimized for Long DNA Fragments
- ✓ Automation-Compatible
- ✓ Superior DNA Purity & Recovery



Sample request?

Please contact us:
info@nimagen.com
+31 (0)24 820 02 41

NimaGen.

Product and Company Information

NimaGen B.V.

Hogelandseweg 88
6545 AB Nijmegen
The Netherlands

T +31 (0)24 820 0241
E info@nimagen.com
www.nimagen.com

Product Guide

AmpliClean™ LF

Product Use

For Research Use Only

Version 1.2 - July 2025

Legal Notice:

AmpliClean is registered trademark of NimaGen B.V.

Alpaqua is a registered trademark of Alpaqua Engineering, LLC